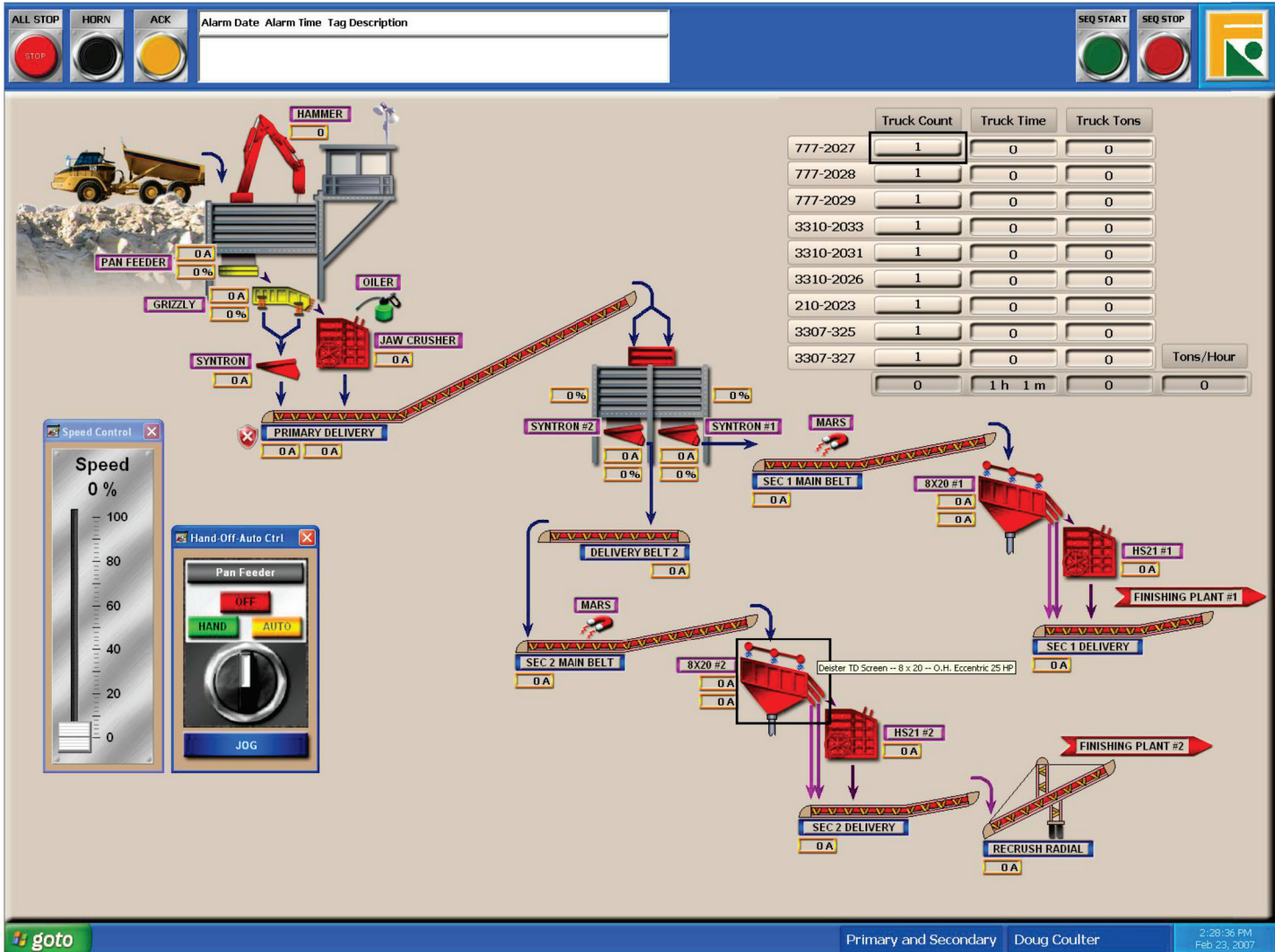


# Kruse PLANT-VIEW

## Aggregate | Sand



**Kruse PLANT-VIEW** has optional data collection features and web based reporting for management system analysis. The reporting can include production, material consumption, operating hours, downtime and reasons, efficiencies, events, faults, utility usage and any other parameters that can be captured by field transmitters. The ultimate goal of our automation systems is to maximize your production while minimizing downtime. In addition, **Kruse PLANT-VIEW** strives to provide an additional level of safety for both your employees and your equipment.

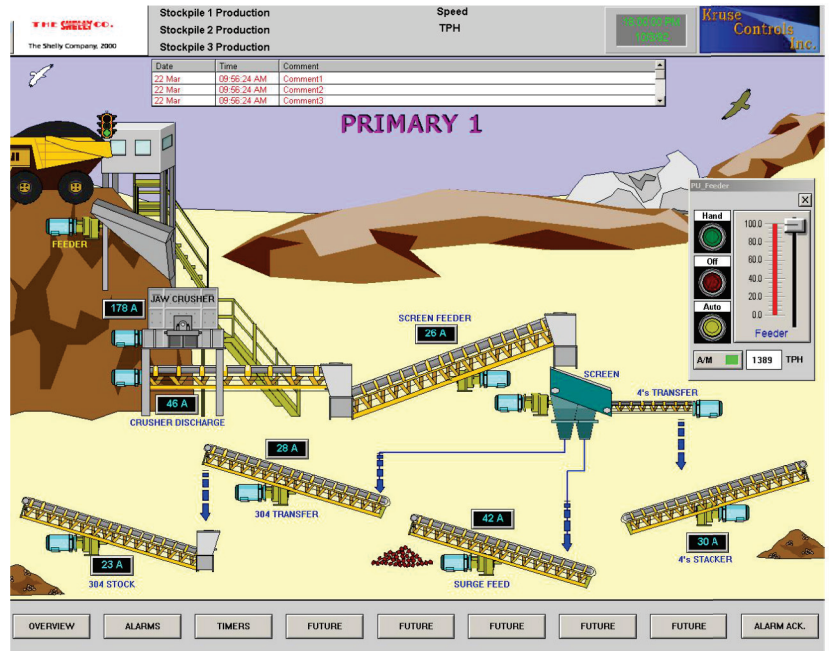
[kruseintegration.com](http://kruseintegration.com)



# KrusePLANT-VIEW

## Aggregate | Sand

The **Kruse PLANT-VIEW** system allows for customization of each facility depending on the equipment used. **Kruse PLANT-VIEW** uses standards from in-house developed templates, symbols and icons, which give each graphical design the same look, feel and operator control that your staff will find friendly and intuitive to interface with. **KrusePLANT-VIEW** includes the Graphical Operator Interface as well as the PLC system to control the complete aggregate plant. The object oriented PLC code and graphics allow for quick, easy, documented modification to fit the needs of any aggregate facility. Additionally, our system standards reduce programming time, start-up time, training, errors and \$\$\$\$\$\$. Each **Kruse PLANT-VIEW** system allows for smooth plant sequential start up and sequential shut down. Each system features automatic safety interlocks for motor overloads, material jams, belt breaks, screw conveyor blockages, material level alarms, etc. The **Kruse PLANT-VIEW** system consist of operator equipment selections for automatic or manual operation as well as complete system status, alarms, trends and historical information. Production, downtime, KW power, material usage and even preventative maintenance can be included in the **Kruse PLANT-VIEW**.



[kruseintegration.com](http://kruseintegration.com)

