

KruseDPM

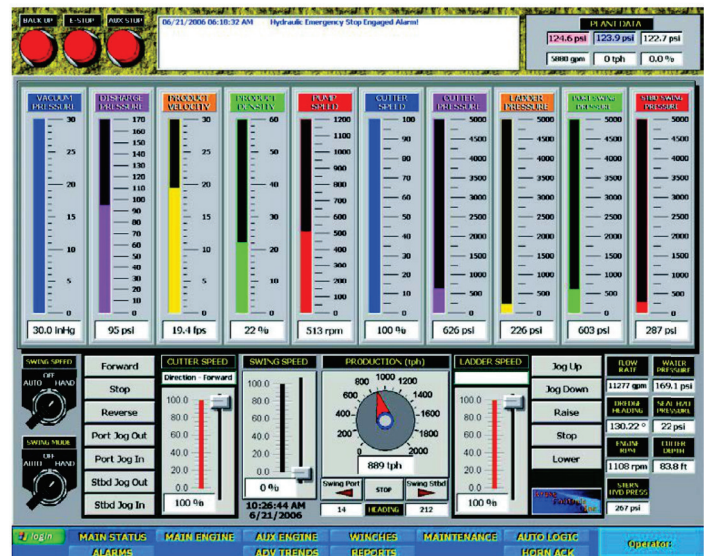
Dredge-Plant Monitor



Wireless Communication



KruseDPM by Kruse Integration allows Operators to monitor or control the plant from the dredge lever room. KruseDPM uses industrial computers and the choice of graphical operator interface, hand-held controller, joystick or rocker style operator button stations in the lever room. In addition to dredge-to-plant information sharing, KruseDPM can be extended to include reporting and real-time operation monitoring from the office.



kruseintegration.com

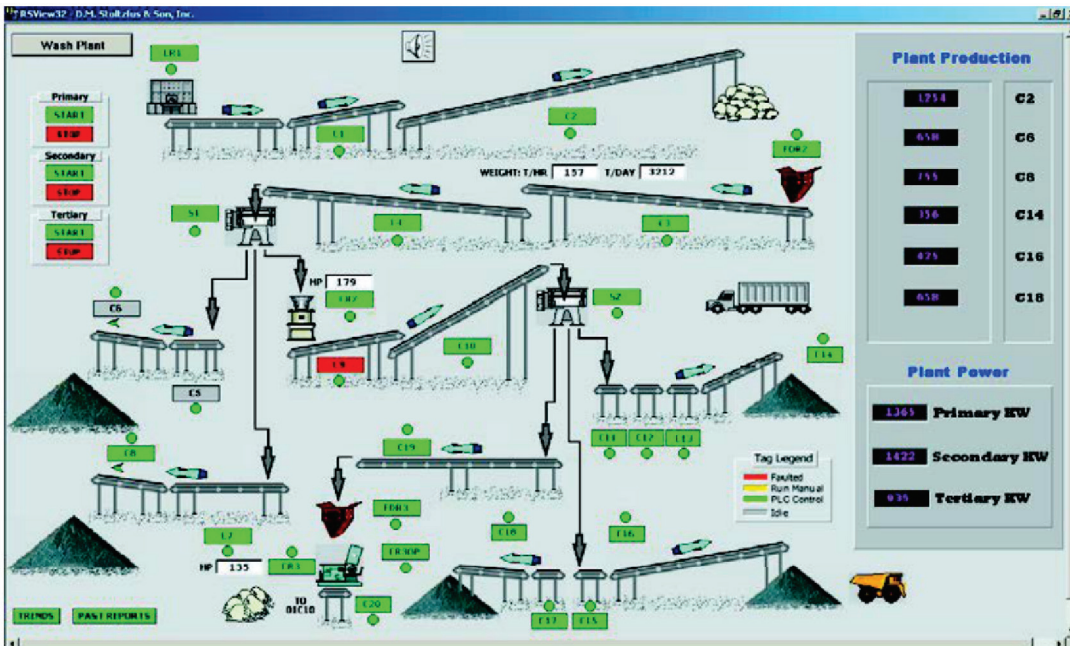
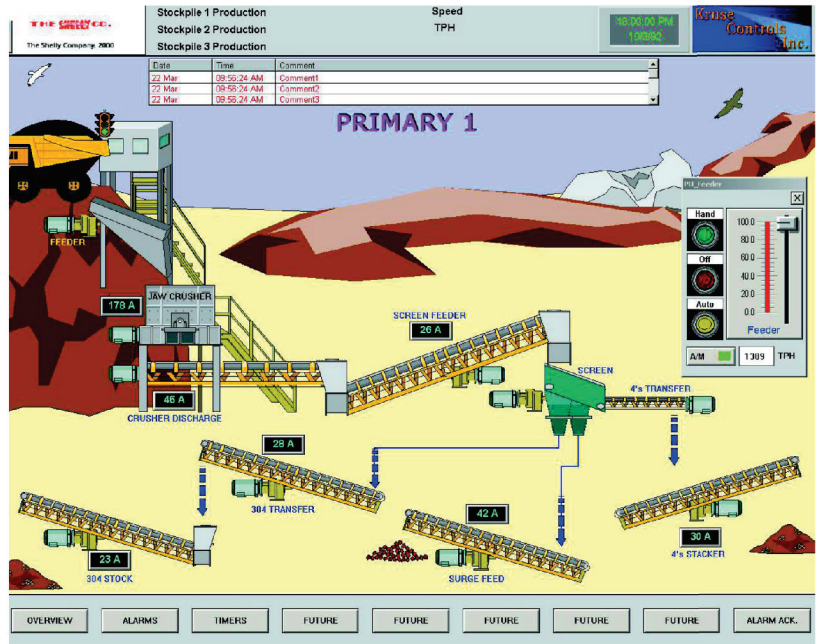


KruseDPM

Dredge-Plant Monitor

KruseDPM includes:

- Robust and Secure Wireless Access Points
- Industrial Computer
- Graphical Operator Interface development
- Plant Motor Currents
- Hydrosizer or Classifier parameters
- Flow and Production Data
- Faults or Alarms
- Plant Operational Status
- Onsite Start-up and System training



kruseintegration.com

