

# KruseCEM-BATCH

Aggregate | Sand



## The Perfect Solution for the Cement Batching Plant

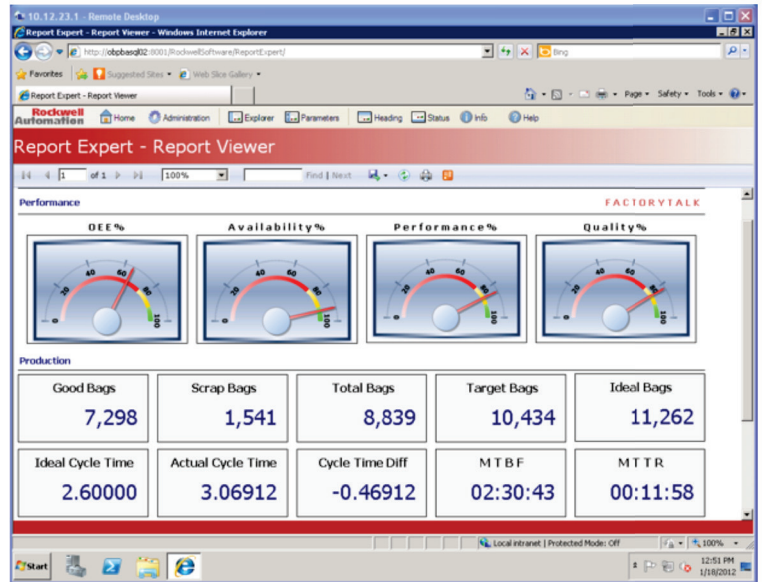
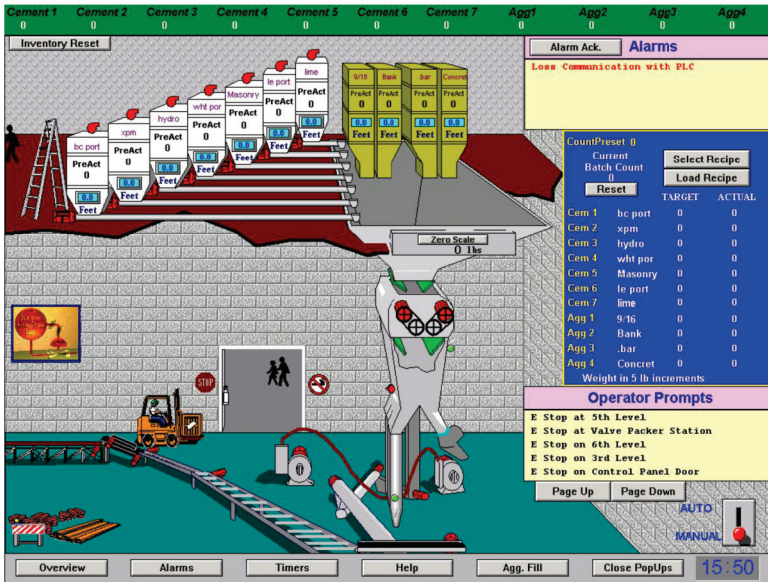
Our proven batching controls have been developed with in-house standards following years of custom batch system installations. **Kruse CEM-BATCH** uses recipe and database technology for selecting the batch ingredients and setup. This allows for error free, secure batch ingredient selections and repeatability for every batch. The control system utilizes the latest off-the-shelf PLC and graphical software. **Kruse CEM-BATCH** will work with any weigh hopper or weigh mixer configuration, as well as multiple weigh hoppers and multiple mixers. The system is expandable or condensed to fit any combination of aggregate and cement bins available. Additionally, the controls and operator interface includes the aggregate bin fill material handling system as well as the cement fill stations. **Kruse CEM-BATCH** program uses sequenced Grafset technology which allows for a very real, user friendly interface prompt, which describes the detailed step that the batch is in, as well as the permissive that is required to continue to the next sequential step. All equipment interlocks are included and displayed (and logged) as faults upon event.

[kruseintegration.com](http://kruseintegration.com)



# Kruse CEM-BATCH

## Aggregate | Sand



**Kruse CEM-BATCH** is flexible and customizable to fit your cement batch needs. Complete raw material usage and inventory control is included. Automatic reports, scheduling, truck load-in and dryer controls can be included. **Kruse CEM-BATCH** will interface with any valve packing system or conveyor palletizer system. We can develop controls to upgrade your current cement batching system to improve productivity, reduce downtime, track inventory and ease the operation. Operators can control and monitor the complete system from one location and management can make informed decisions based on the automatic reports and trends. The Operator Interface can be a graphical software package on a desktop or an industrial computer or even an OIT (operator interface terminal) like an Allen Bradley Panelview.

[kruseintegration.com](http://kruseintegration.com)

